

SEEK



TIDE  
&



Curiosity.  
Discovery.  
Growth.

# WELCOME TO TIDE & SEEK BEACH SCHOOL

Tide and Seek was founded to offer young people the chance to engage in purposeful and developmentally appropriate creative learning experiences. We want to ignite the imagination, spark creativity, promote wellbeing, breathe in the fresh, sea air and fill young hearts and minds with the beauty and wonder of nature.

*By Sophie Jones, Founder*





Dip your toes into a  
new way of learning.



# YOUNG MINDS IN THE WILD...

Tide and Seek gives children the opportunity to learn and develop in a wild, natural environment. We believe there is no better classroom than the great outdoors. Our unique sessions encourage curiosity, discovery and growth and allow young people to experience a sense of freedom and creativity.

We are one of the first dedicated beach schools on the East Kent coast to promote and encourage outdoor, coastal learning and highlight ongoing, marine conservation threats.

Run by qualified teachers, we want to foster a love for the beach and equip

younger generations with the knowledge and confidence to become champions and future guardians of our vulnerable coastlines.

Our curriculum-based sessions offer schools a unique experience for pupils to learn on the beach and our lessons are tailored to suit age, group size and ability. Whether children are exploring marine habitats and lifecycles, creating beach art or den building, we believe children need fresh air and the chance to interact with nature. Our lessons improve overall well being and mental health.

# TIDE AND SEEK



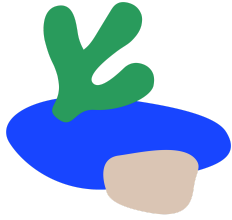


“Can we move  
our school to  
the beach?”

# GET TO KNOW YOUR GUTWEED FROM YOUR SEA LETTUCE

Our dynamic classroom is on the beautiful Stone Bay beach in Broadstairs. Tide and Seek helps schools take lessons to the spectacular coast by offering six main curriculum-based strands. These can be adapted to meet each individual school's needs and can be delivered weekly over a term or taught as a stand-alone session.

# THE SESSIONS



## Explore The Shore

---

An introduction to a coastal environment and a chance to explore the shore, wave watch, skim stones, build shelters and share existing knowledge about the coast. This session includes a discussion on rules for keeping safe on the beach and a beach clean.



## Who'd Live In A Shell Like This?

---



Investigate a marine habitat and identify different species. Look for wildlife in rock pools and other areas, learn the seashore code, bird watch and think about different food chains in a coastal environment.





## Save Our Seas!

---

Learn about Marine Conservation Zones (MCZ) and the impact humans have on the marine environment. Build a MCZ habitat using natural materials foraged from the beach, investigate how different materials break down in the sea and carry out a beach clean and litter survey.

## The Wonders Of Waves

---

Understand more about coastal processes such as wave formation and tides. Explore if the tide is coming in or out and how the moon plays a part. Investigate waves through experiments and think about how the wind controls the water and how much energy it has.



## Beach Treasures



Identify natural items washed up on the shore and use these materials to create art, including beach pictures, pendants, bracelets, mobiles and pebble creatures. Practise landscape sketching by choosing a position on the beach to draw from. Take part in a scavenger hunt.



## Sand Between Your Toes



A child-led session which provides the opportunity to reflect on learning and reinforces key messages learnt throughout the Tide and Seek programme. Pupils can use this final lesson to share, explore further and choose from a range of activities and games.

Young minds  
in the wild.



# EXAMPLE SCHEDULE

The schedule below, shows an example day of activities, based on a group size of 30 children and including 3 x 1 hour workshops.

We have also provided the curriculum links for each of our sessions on the following pages.

**Arrival around 9.45am, with time allowed for welcome and a toilet break before sessions begin.**

	Starfish	Limpets
10.00-11.00	Rock pooling	Den building
11.00-12.00	Build a habitat	Rock pooling
12.00-12.45	Lunch	Lunch
12.45-13.45	Den building	Build a habitat
13.45-14.00	Beach clean	Beach clean
14.15	Departure	



**PSHE**

.....

Health and wellbeing

- KS1 - Learn about rules and how to keep safe in the environment, including water.
- Recognise a personal and shared responsibility for keeping themselves and others safe.
- KS2 - recognise, predict and assess risks in different situations.
- Decide how to manage risks responsibly and use as an opportunity to build resilience.
- Differentiate between terms risk, danger and hazard.

Living in the wider world

- Importance of responsible behaviours and actions.
- Importance of respecting and protecting the environment.
- Learn what improves and harms their local, natural and built environment and develop strategies and skills to care for these.

**PE**

.....

Lead active healthy lives

- KS1 - Take part in co-operative physical activities.
- KS2 - Engage in adventurous, outdoor activity challenges both individually and within a team.

**EXPLORE  
THE  
SHORE** 

**Science KS1**

.....

Everyday materials

- Distinguish between an object and the material from which it is made.
- Identify and name a variety of materials.

Seasonal changes

- Observe and describe weather.

Living things and their habitats

- Explore and compare differences between things that are living, dead and never been alive.

**Design and technology**

.....

- KS1-Build structures exploring how they can be made stronger and more stable.
- KS2- apply understanding of how to strengthen and reinforce structures to make them more stable.

**Geography KS1**

.....

- Use simple fieldwork and observation to study the physical features of local environment.
- Use basic geographical vocabulary - beach, cliff, coast, estuary.

**English - spoken language**

.....

- Listen and respond appropriately to adults and peers.
- Ask relevant questions to extend understanding and knowledge.

Science KS1

Statutory requirements

- Observing closely
- Identifying and classifying
- Gathering and recording data

Living things and their habitats

Animals:

Y1 - Identify and name a variety of common animals including fish birds and mammals.

Y2 - Identify that most living things live in habitats to which they are suited. Describe how animals obtain their food from plants and other animals and use the idea of a simple food chain.

Non-statutory guidance

Y1 - Pupils should use the local environment throughout the year to explore and answer questions about animals in their habitat .

Y2 - Pupils should compare animals in different habitats for example on the seashore, woodland, ocean and rainforest. Pupils might work scientifically by sorting and classifying things and recording their findings using charts.

Computing

KS1 - Use technology purposefully to create, organise, store, manipulate and retrieve digital content.

KS2 - Use search technologies effectively.

WHO'D  
LIVE IN A  
SHELL  
LIKE  
THIS?



Maths

Statistics

Interpret and present data in different contexts.

Science – KS2

Working scientifically

Record data and results with increasing complexity to identify, classify and describe living things and materials and patterns found in the natural environment.

Living things in their habitat

Find out about the work of naturalists (e.g. David Attenborough). Through observation, classify animals into vertebrates and invertebrates.

Identify how animals and plants are adapted to suit their environment in different ways.

Properties and changes of materials

Give reasons based on evidence for the particular uses of everyday materials including metals, wood and plastic.

Science

Properties and changes of materials

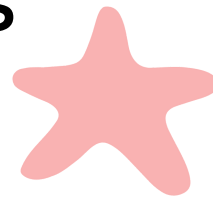
Explore and compare properties of materials.

PSHE

Living in the wider world

- KS1 - Learn what improves and harms their local, natural environment and develop skills to care for these.
- KS2 - Research, debate and discuss topical issues and problems and offer their recommendations to appropriate people.
- Understand they have responsibilities, rights and duties in the community and towards their environment.

**SAVE  
OUR  
SEAS**



Science

Working scientifically

KS1

- Observe closely using simple equipment
- Use observations and ideas to suggest answers to question
- Perform simple tests

KS2

- Recognise when a simple fair test is necessary
  - Help set up a fair test
- Use test results to make predictions and set up further comparative fair tests.

Living things and their habitats

KS2

- Explore examples of human impact (both positive and negative) on environments and the negative impacts of population, development and litter.

PE

Perform dances using a range of movements and patterns.

English

Writing

- Develop settings in stories.
- Use beach setting as a stimulus for creative narrative writing.
- Use drama and role play to improvise and develop ideas for writing

Art and design

- Use drawing, painting and sculpture to develop and share ideas, experiences and imagination.
- Learn about the work of a range of artists.
- Create sketchbooks to record observations.
- Evaluate and analyse creative work.

# BEACH TREASURES



Music

- Singing songs, speaking chants and rhymes.
- Experiment with, create, select and combine sounds to produce simple compositions.
- Improvise and compose music for a range of purposes.



Science KS2

---

Forces

- Air and water resistance.
- Action of wind on water.

Earth and Space

- Gravitational effect of the moon on the earth.

Geography

---

Inspire a curiosity and fascination about the world.

KS1

- Use basic geographical vocabulary to refer to key physical and human features.

KS2

- Develop understanding of processes that give rise to key physical features of the world.
- Communicate geographical information in a variety of ways - maps, writing, charts.
- Use simple compass directions.
- Use symbols and keys on maps.

# THE WONDERS OF WAVES



History

---

Understand historical concepts such as continuity and change.

- Understand some of the ways we find out about the past.
- Learn about changes within living memory.

# EDUCATION & SUPPORT

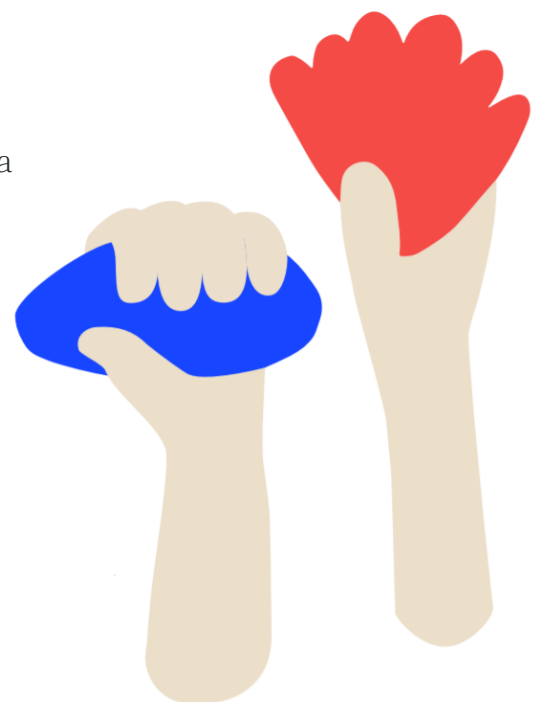
Learn beyond the classroom...

Tide and Seek works with teachers to help enhance learning experiences.

The beach is the most dynamic classroom where children can step into another world and learn a wide variety of subjects - there is no limit!

Our teaching ties in with the national curriculum and Outdoor Environment Best Practice as recommended by OFSTED. At a time when the government is actively encouraging learning outside of the classroom, Tide and Seek offers unique sessions in an outstanding, wild environment to all schools and children.

Pupils will have the opportunity to achieve the National Outdoor Learning Award (NOLA) - a non-competitive, inclusive, and accessible award scheme. The award encourages people to connect with, enjoy, and care for a wild place whilst developing high levels of motivation, esteem, skill, knowledge and a desire to learn.



Explore  
a wild  
place...





Nurture young  
people's confidence  
through nature.

# CONTACT INFO



Please email  
[sophie@tideandseekbeachschool.co.uk](mailto:sophie@tideandseekbeachschool.co.uk)  
to discuss your visit.



Encourage natural  
creativity, problem  
solving and teamwork.





## TIDE AND SEEK



# SM INFO BEACH INFO

Join the conversation over on Instagram:

@tideandseekbroadstairs

and check out our website,

[www.tideandseekbeachschool.co.uk](http://www.tideandseekbeachschool.co.uk)



BEACH SCHOOL  
BROADSTAIRS





TIDE & SEEK BEACH SCHOOL  
BROADSTAIRS  
EXPLORE  
DISCOVER  
LEARN